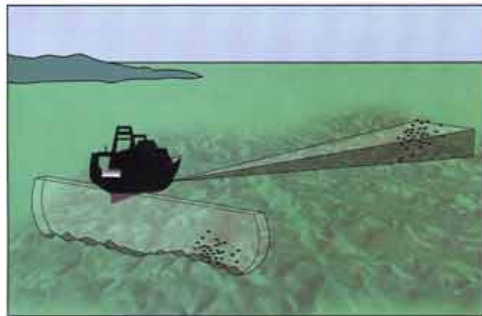
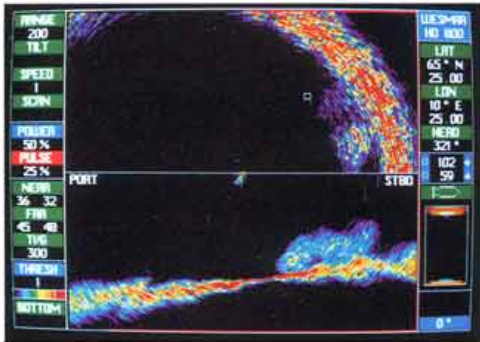
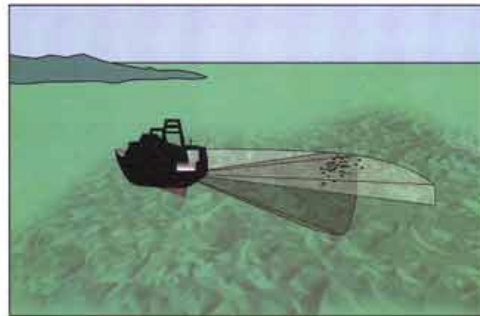
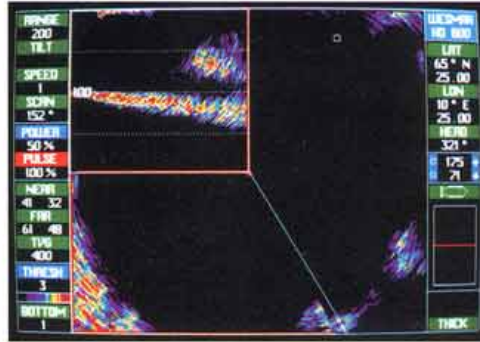


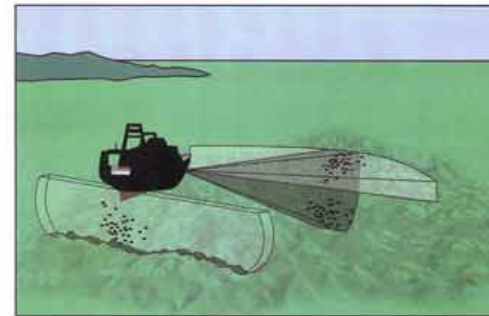
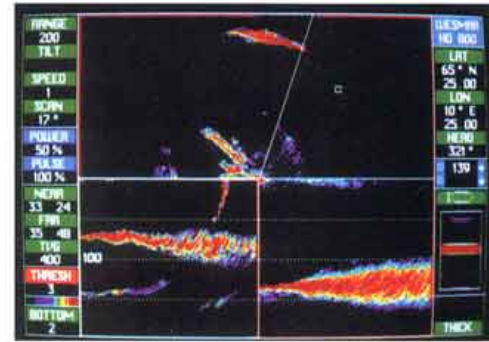
# CHOOSE HD800 SONAR FOR ITS EXTRAORDINARY DIVERSITY



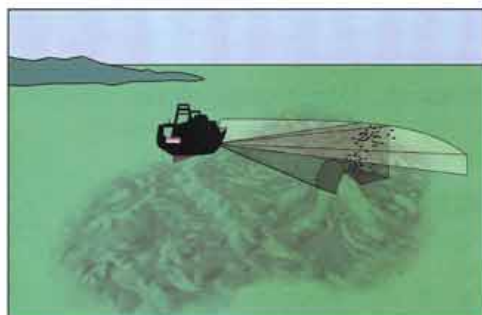
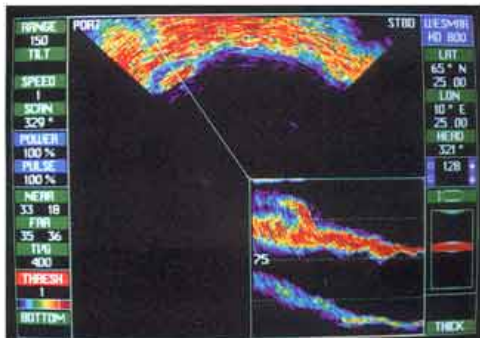
The HD800 in the Split Screen Mode. The top screen shows fish off the bottom to starboard and the lower screen shows a vertical profile of the fish school.



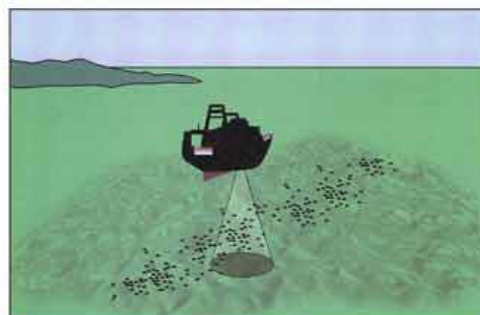
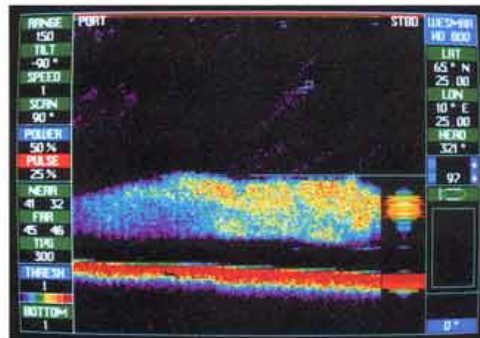
The HD800 in Dual Screen showing full screen sonar with two small schools, lower right. Upper left, is a vertical profile of one of the schools.



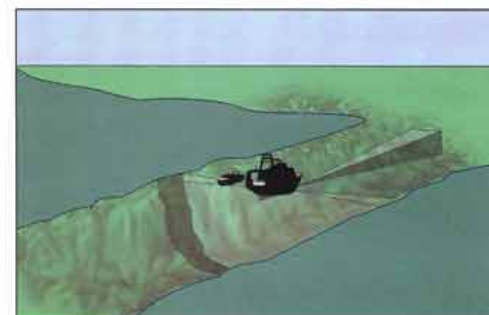
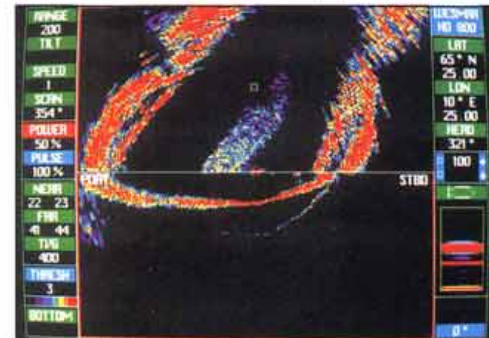
The HD800 in Split Screen with top screen display showing system scanning the surface for herring; lower left is a profile of surface fish and shows an additional school on the bottom. The lower right is in bottom profile mode.



The HD800 in Dual Screen Mode. Here the sonar is scanning the bottom for fish. What seems to be fish off the bottom profiles as a pinnacle.



The HD800 in Video Sounder Mode shows a huge school of herring with the fish up to the right. The transducer is stabilized for perfect discrimination.



The HD800 in Split Screen showing the vessel navigating a narrow channel as another passes to port. Complete profile of the channel is shown in the lower screen.

## Unique Split Screen Approach

The HD800 is actually two sonars in one. With split screen for trawlers and a dual screen for purse seiners, this sonar scans vertically and horizontally, a truly revolutionary application. In split screen the operator of an HD800 can scan horizontally, in front of the vessel to locate the fish and vertically to follow the target close to the bottom, under and to the sides of the boat, as the vessel moves forward. This scanning advantage has never been available to sonar operators before.

## WESMAR

**Western Marine Electronics**  
 14120 NE 200th Street, Box 7201  
 Woodinville, WA 98072  
 Telephone (425) 481-2296  
 Fax (425) 486-0909  
 E-mail [sonar@wesmar.com](mailto:sonar@wesmar.com)  
 URL [www.wesmar.com](http://www.wesmar.com)

## Dual Screen Action

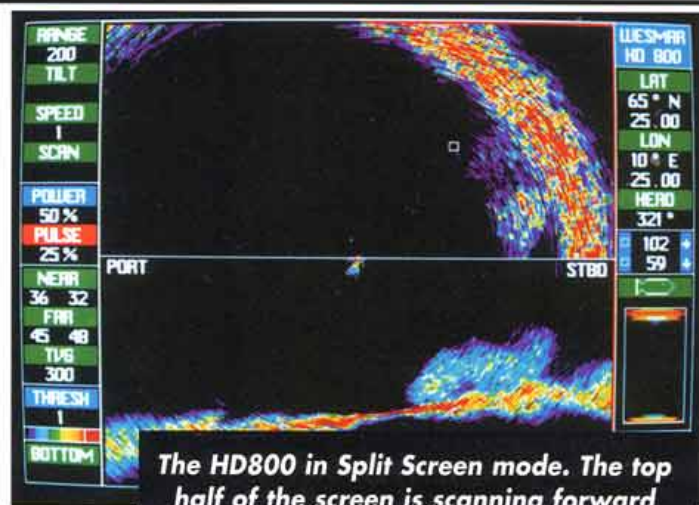
In the full sonar screen format, the HD800's full screen feature empowers operators to scan in the traditional forward mode while providing instant soundbeam manipulation that shows on an overlay screen. The simple flip of a switch immediately maneuvers the soundbeam to vertical scanning, producing a window on the sonar that shows the captain's density or size of the fish school they are monitoring. In Dual Screen mode 75% of the screen shows the sonar searching forward, and 25% displays the fish school in a vertical plane.

# WESMAR'S NEW HD800 SONAR

## (The World's Best Gets Better)

**A**n historic new advancement in sonar, the WESMAR HD800 has gone where no sonar has gone before. By merging new technology and established fishing applications, WESMAR created a "super sonar," the fastest, most powerful, and most colorful system in the world. It is the only sonar ever produced so diversified it can be used for two major fishing applications: purse seining and trawling.

### MAXIMIZE YOUR CATCH. CHOOSE THE WORLD'S MOST ADVANCED SONAR



**The HD800 in Split Screen mode. The top half of the screen is scanning forward marking herring off the bottom. The lower half shows the sonar profiling the bottom below and to the sides of the vessel. As the HD800 profiles the bottom, the school of herring marks to starboard off the bottom.**

#### 1. Simultaneous Forward and Profile Modes

WESMAR's new profile mode operates in conjunction with forward scanning mode. It places the transducer in 1.8 degree steps in the vertical plane providing operators a complete view across the bottom. To further ensure maximum performance in shallow water, the HD800 offers high frequency and narrow soundbeam options, reducing shallow clutter.

#### 2. Automatic Target Tracking, GPS

The HD800's automatic target tracking feature tracks targets on and off the screen, allowing you to track potential catches, while looking for others. Unique iconography, including the image of a swimming fish, keeps captains aware the tracking feature is engaged giving speed, bearing and range of the fish school. Each track is entered into a log that provides date, time, latitude and longitude.

#### 3. Multiple Display Windows

The HD800 provides an array of display options. Several high quality viewing

systems are available including: full screen sonar with fishlupe, full screen bottom profile with fishlupe, and full screen sounder display.

#### 4. 100% More Target Colors

The HD800 has 16 brilliant target colors to choose from and adjustable sonar functions so an operator can create the ideal color display: their own.

#### 5. Seamless Programing Adjustments

Both dual screen and split screen models have separate controls that can be programmed and preset to the owners' specifications. Range, Near, Gain, Far Gain, TVG, Thresholds, Scan Speeds, Sector Sizes, and numerous color enhancement terminals can be manipulated by moving a switch. Like all WESMAR sonars, the HD800 is designed for easy operation.

#### 6. Power Boost Mode

Power Boost mode instantly provides extra long pulse width, dramatically extending range. WESMAR's selection possibilities are enor-

mous; operators can choose pulse width options from 3 to 100%.

#### 7. Instant Sector Change Mode

A simple turn of the bearing knob instantly repositions the soundbeam on the school of fish, saving you time and increasing your chance of constantly monitoring the fish.

#### 8. Extended Range Electronics

With an elite transmitter, receiver, and preamp located on the hoist, WESMAR has extended detection range significantly.

#### 9. Fast Scan Transducer Domes

New 8" soundomes for 60kHz and 110 kHz scan 33% faster than before.

### THE GREATEST FEATURES EVER ASSEMBLED IN A SONAR SYSTEM MULTIPLE CONTROLS FOR EVERY SONAR APPLICATION

#### WESMAR sonars are operating around the world - with incomparable success

Captain Federico Algorta, owner of a WESMAR sonar onboard a 25 meter purse seiner after years of fishing with competitive sonar models: "Thank you WESMAR, I have been blind for 9 years!"

Captain Norman Sigmund, owner of the 80' Mr. Wind, with a WESMAR sonar: "Now we average 100 tons a day."

The owner of the *Matina Fontan Dos*, Spanish purse seiner, after installing a WESMAR found it paid for itself the first night out.

"WESMAR Sonars are the best I've ever seen," ... owner of Alaskan herring seiner.

Skipper of a British Columbia Seiner says his "new WESMAR sonar is four times better than his other sonar."

Canadian Skipper with a WESMAR on board his herring and salmon seiner: "WESMAR (sonar) made our season in one day."



Easy to adjust controls on the front panel of the console with separate controls for the dual scan and split screen features.