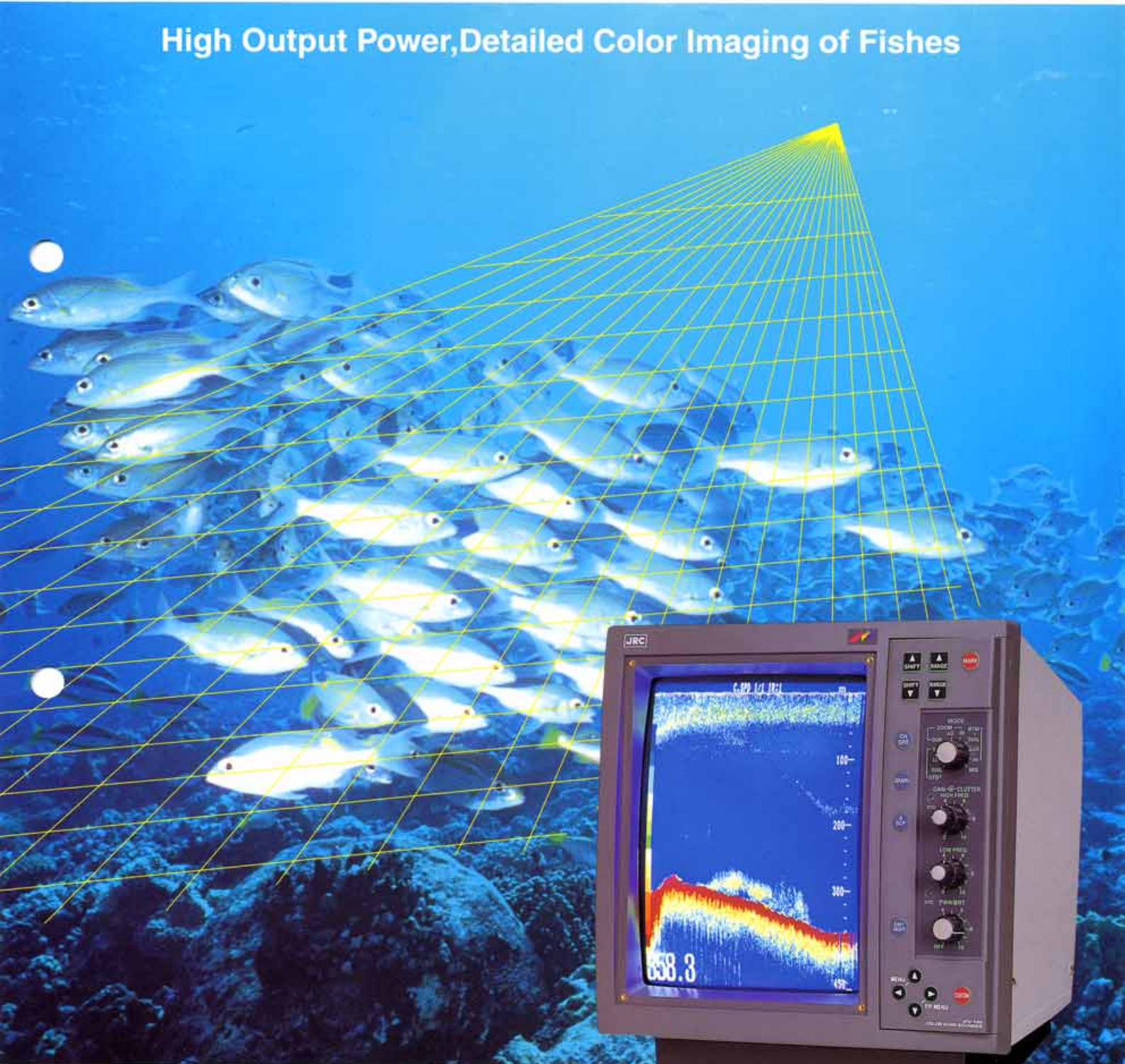


12-inch

# JRC COLOR ECHO SOUNDER

JFV-130HP (Vertical) JFV-131HP (Horizontal)

High Output Power, Detailed Color Imaging of Fishes



**JRC** Japan Radio Co., Ltd.

Three Storable Setups

Large Functional Echo Sounder

# Optimum Fish Detection for various

Bright, Sharper Detailed Color Images

The use of a bright precision CRT provides sharper pictures of fish schools, plankton and seabed conditions. With the JRC unique reset function, three different settings can be stored for various types of fishing operations and the optimum setup can be selected when the type of fishing operation is changed from one to another. The sounder provides ease of operation on the distinct display and easy setting from the pictured menu screen. Vertical or horizontal models are available to meet your preference.

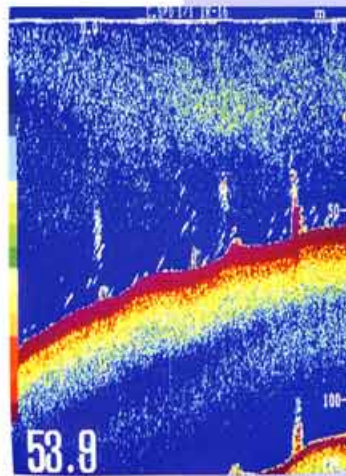


JFV-131HP(Horizontal)

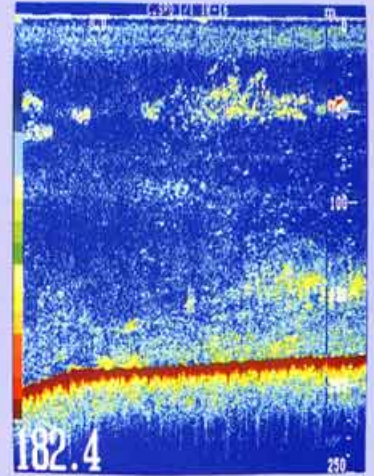
## FEATURES

### Brighter, Shaper Display.

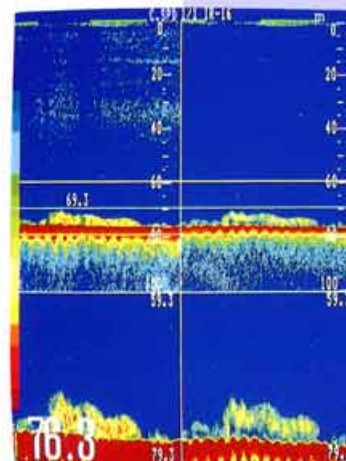
- The 12-inch color display has an even higher resolution of 512 x 480 pixels than the conventional models, thus offering more precise and sharper images.
- The 16 color tones can be separately selected. Four colors are used to display pictures and four are selectable for the background. 8 user colors can be set for desired color tones. The user color settings can be used to highlight desired echoes depending of fish types or bottom conditions.
- By using a dual frequency, you will begin to understand and recognize different fish species.
- The BOTTOM LOCK EXPAND mode provides the image to different seabed conditions.
- High output power 3kW, transmitter provides clear picture with bottom fish schools.



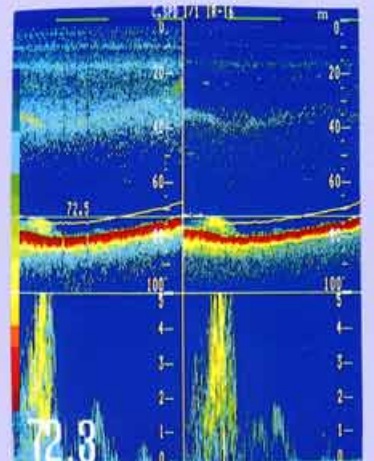
▲Example(1) of fish reaction



▲Example(2) of fish reaction



▲Dual frequency mix with partial enlargement



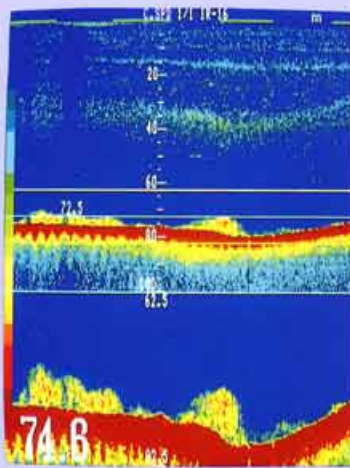
▲Dual frequency mix with bottom enlargement

# Types of fishing

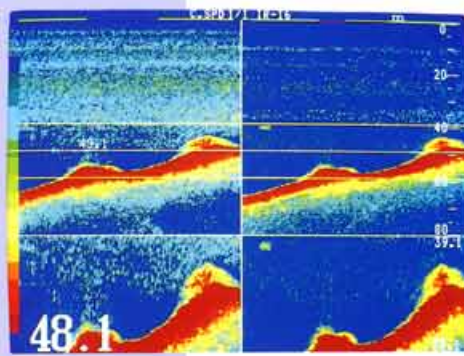
## SIMPLE OPERATION

● The operation panel has a minimum arrangement of required keys and controls. Sensitivity, noise rejection and STC can be fine set according to the sea areas, seasons and methods of fishing with separate controls.

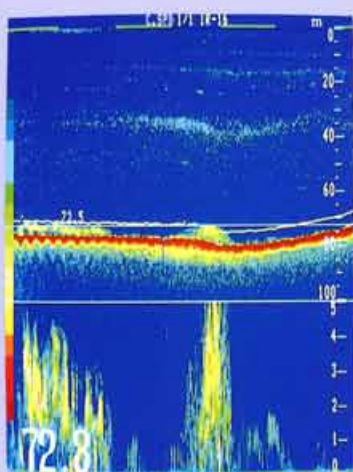
● The pictured menu can be used to preset the auxiliary function according to the fishing grounds and fish types and to store up to three setups in memory. Once these setups are stored, the function used can be easily changed from one to another. Should you make an error in operation, pressing the "CUSTOM" button allows you to return to the setup being used.



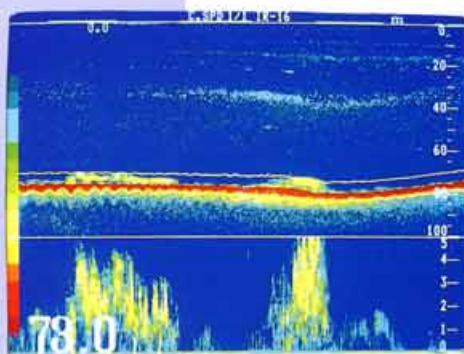
▲ Dual-Split with partial enlargement. (JFV-130HP)



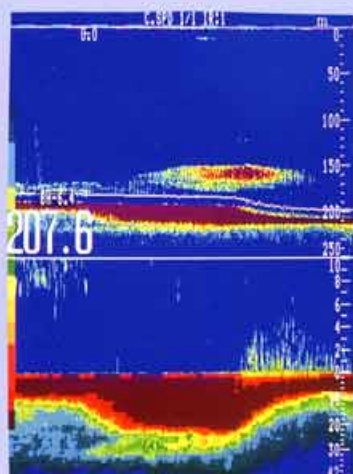
▲ Dual-Split with partial enlargement (JFV-131HP)



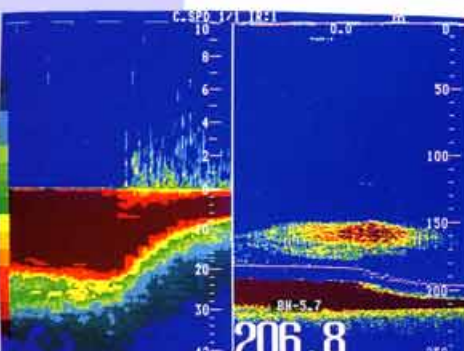
▲ Dual-Split with bottom enlargement (JFV-130HP)



▲ Dual-Split with bottom enlargement (JFV-131HP)



▲ Dual frequency mix bottom (JFV-130HP)



▲ Dual frequency mix bottom enlargement (JFV-131HP)

## RELIABLE DETECTION of SURFACE and BOTTOM FISH

● The introduction of narrow zero lines and a new transducer makes transducer lines finer. A high-speed emission of 300 or more cycles per minute enables small fish near the sea surface layer to be clearly determined. Bottom enlargement displays with 16 color tones are so distinct that bottom fish and the sea bed can be clearly discriminated.

## Various Functions

- Simultaneous Drawing \*1  
When the screen mode is changed, the previous picture will be displayed to allow easy comparison between the previous and new pictures.
- A-Scope Display  
Fish echoes are clearly display in 16 color tones with echo signal intensity. This display is turned on or off by a simple one touch operation.
- Distinction Screen Mode  
The distinction screen mode is added to the dual-frequency mode, Thus three screens are available for helpful fish type definition.
- Water Temperature and Depth Graphic Display (with Alarm) \*2, \*3  
A graphic display of changes in water temperature and water depth can be overlapped to fish images. Since these parameters are recorded, their graphs may be displayed only when requested and by a simple one touch operation.
- Bottom discriminate mode  
The bottom tail portion display just below the bottom lock expand view. The variations of bottom discrimination can be found from the variation of bottom tail width.

Notes;

- \*1 : Simultaneous drawing for each mode
- \*2 : Water temperature sensor is required for water temperature display.
- \*3 : Optional remote control required for operation the alarm function

# SPECIFICATIONS

<b>Display type</b>	12-inch color CRT(choice of vertical or horizontal)
<b>Pixels</b>	512 x 480 (horizontal x vertical)
<b>Color Tones</b>	16 color tones :(4 for display, 4 for background,) Any color tones can be selected freely.
<b>Shift</b>	0-1500 in 1 meter steps (units in meter, fathoms or any other) The UP and DOWN keys are used to set the SHIFT
<b>Image Display Range</b>	
<b>Manual</b>	15 ranges presettable with panel keys (normally 5 to MAX 2000 m) in step mode.
<b>Auto</b>	Automatically sets the range to display the sea bottom on the screen.
<b>Depth Unit</b>	Meters, Fathoms ,Feet and any other unit value settable from 0.3 to 1.900m
<b>Display Modes</b>	With rotary switch, graph panel keys and A-scope button.
<b>Standard</b>	Standard screen (full screen)
<b>Dual-Split</b>	Dual-Split screen (Vertical or Horizontal), 50:50%
<b>Standard/Enlargement</b>	Split screen with enlargement (top and bottom), approx. 64:36%, 50:50% (also available as vertical split)
<b>Dual-Split/Enlargement</b>	Mixed screen (left and right), split screen with enlargement (top and down), approx. 64:36% or 50:50%, full selectable from menu.
<b>A scope</b>	10% of the area of each screen when the button is pressed at any screen
<b>Graphic function</b>	Graphs displayed on all the screens (optional sensors required)
<b>Cursor</b>	Variable range marker with depth indication : Indication to the first decimal point at depth of less than 100 m
<b>Depth scale</b>	Numerical graduated scale at the right or center of screen indicates the depth.
<b>Bottom depth indication</b>	Numerical indication at the left of screen to the first decimal point
<b>Alarms *1</b>	(set with the remote control)
<b>Territory sea area</b>	Settable to an area within 2000 meters from an transducer line. Also made available as a fish alarm by changing the setting level.
<b>Water</b>	Settable from - 10℃ to +50℃
<b>Image memory</b>	Two right-half screen can be stored(with the remote control)

\*1 : Optional remote control is required.

\*2 : Water temperature sensor is required for this graphic display.

\*3 : Except for mixed display.

## Option



Remote control



Hood

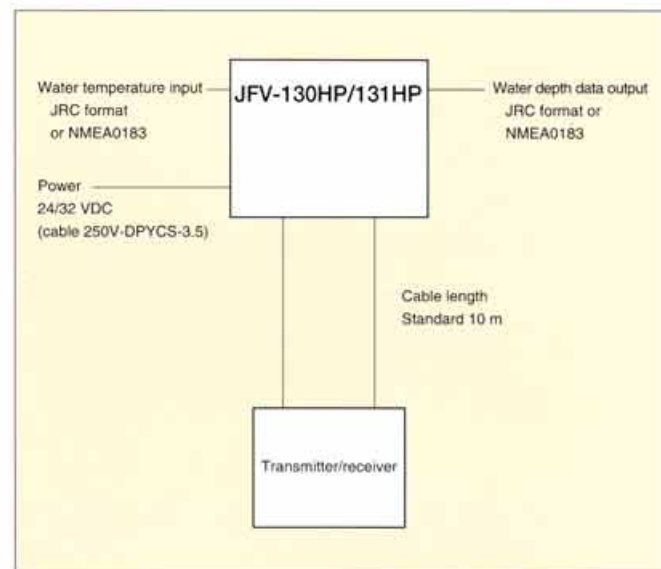


Rectifier

filter

<b>Color sample</b>	Displayed on the left screen
<b>Time mark</b>	Displayed on the top of screen in steps of 30 sec (15sec drawing, 15sec non-drawing)
<b>Interference control</b>	OFF, 1,2, Automatic
<b>Draft control</b>	Presentable in 0.1 units from 0 to 20 units from the menu screen
<b>Scan speed</b>	1/1, 1/2 ... 1/9 or stop
<b>Marker</b>	Vertical line (with marker output terminal)
<b>Backup</b>	Available
<b>Brightness</b>	Adjustable with control (common with POWER)
<b>Panel illumination</b>	Fixed
<b>Sensitivity</b>	Adjustable with control
<b>Distinction</b>	Set with menu key on the receiver
<b>STC (defaming)</b>	Curve is selected from menu. Strength is with semi-fixed variable resistor on the panel.
<b>Clutter (noise rejection)</b>	Adjustable with control
<b>Color Rejection</b>	Presentable with menu screen
<b>Frequencies</b>	200, 75, 50 and 28kHz
<b>Transmitter</b>	3kW
<b>FM transmission</b>	200kHz
<b>Output reducer</b>	Built-in : Conforming to the type certification standard provided by the Fisheries Agency of Japan
<b>Transmission pulse</b>	Range connected long-to-short two-step change
<b>Transmission</b>	300cycles/min (0 to 120 m)
<b>Water depth data</b>	JRC and NMEA0183 output
<b>Return/store</b>	Three setups
<b>Water temperature</b>	JRC and NMEA0183 water temperature
<b>Power</b>	24/32VDC
<b>Outside</b>	325wide × 384high × 433deep
<b>Weight</b>	20kg

## Schematic Diagram



# List of Components

Components	Description	Model No.	Q' ty	Remarks
	Finder	JFV-130HP	1	Vertical
	Transmitter/receiver equipment	Depends on frequency and equipment method.	1~2	See attached sheet.
	Spares	7ZXBS0004	1	Two fuses
	Power cable	CFQ-8383-3	1	With 4P connectors
	Vinyl cover	MPXP30911	1	
	Operation card	7ZPBS7505	1	
	Instruction Manual	7ZPBS2503	1	
	Topping screws	BRTG02032	4	M6×25
	Washer	BRTG00186	4	M6

Options	Description	Model No.	Q' ty	Remarks
	Filter	MPOL30152		
	Hood	MTT303329		
	Interface tool and materials	7ZZBS0001		
	Remote control switch	NCH-466E		Cable of 4 m
	Rectifier	NBA-3263		100VAC Input, 24 VDC output

Total Model No.

JFV-130HP E KM B  
① ② ③ ④

②			③	
Frequency	Output	3kW	Input voltage	Symbol
200KHz		K	24/32V DC	B
75KHz		L	100/220V AC	J
50KHz		M	①	
28KHz		N	Panel characters	Symbol
Others		W	Japanese	J
			Alphabetical	E

④ : Special specifications available.

Components	Description	Model No.	Q' ty	Remarks
	Finder	JFV-131HP	1	Horizontal
	Transmitter/receiver equipment	Depends on frequency and equipment method.	1~2	See attached sheet.
	Spares	7ZXBS0004	1	Two fuses
	Power cable	CFQ-8383-3	1	With 4P connectors
	Vinyl cover	MPXP30911	1	
	Operation card	7ZPBS7505	1	
	Instruction Manual	7ZPBS2503	1	
	Topping screws	BRTG02032	4	M6×25
	Washer	BRTG00186	4	M6

Options	Description	Model No.	Q' ty	Remarks
	Filter	MPOL30152		
	Hood	MTT303329		
	Interface tool and materials	7ZZBS0001		
	Remote control switch	NCH-466E		Cable of 4 m
	Rectifier	NBA-3263		100VAC Input, 24 VDC output

Total Model No.

JFV-131HP E KM B  
① ② ③ ④

②			③	
Frequency	Output	3kW	Input voltage	Symbol
200KHz		K	24/32V DC	B
75KHz		L	100/220V AC	J
50KHz		M	①	
28KHz		N	Panel characters	Symbol
Others		W	Japanese	J
			Alphabetical	E

④ : Special specifications available.

# Transmitter/ receiver Equipment Model Nos.

Transmit output Frequency(kHz)	Transmitter/receiver Model No.	Dual-frequency Ship Bottom Equipment Model Nos.1
	With 3kW transducer connected Rubber mold type	With 3kW transducer connected
200	CFT-220	NKP-2-20F/S/W/T
75	CFT-720A	NKP-7-20F/S/W/T
50	CFT-520	NKP-5-20F/W/T
28	CFT-320	NKP-3-20F/W/T

Transmit output Frequency(kHz)	Dual-frequency Ship Bottom Equipment Model Nos.2	Remarks
	With 3kW transducer connected	
200/75	NKP-27-22F/W/T	
200/50	NKP-25-22F/W/T	
200/28	NKP-23-22F/W/T	
75/50	NKP-75-22F/W/T	
75/28	NKP-73-22F/W/T	
50/28	NKP-53-22F/W/T	

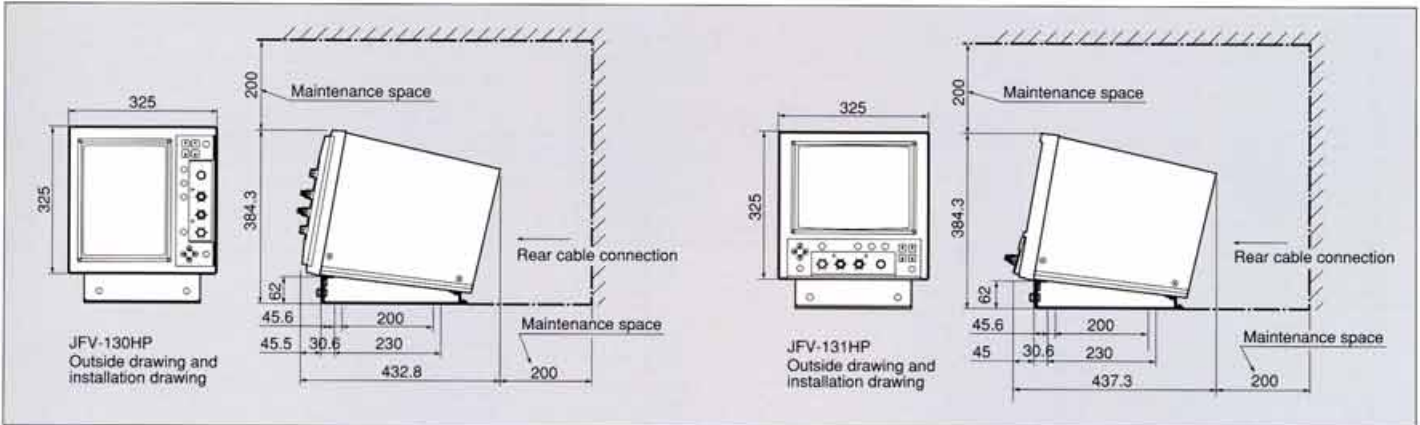
**Legend**

K, KR, KD .....Gun metal transducer  
 F/KF/KRF/KDF .....For FRP ship  
 S/KS/KRS/KDS .....For broad side equipment  
 W/KW/KRW/KDW For wooden ship bottom  
 T .....For iron ship bottom

## List of Transducer



## Outside Drawing



※ Design and specifications may be subject without notice

For further information, contact:

**JRC** *Japan Radio Co., Ltd.*

Since 1915 JRC Homepage <http://www.jrc.co.jp/>

**Main Office:** Akasaka Twin Tower(Main), 17-22, Akasaka 2-chome, Minato-ku, Tokyo 107, JAPAN

Telephone: Tokyo(03)3584-8789, 8832

Facsimile: Tokyo(03)3584-8795

Telex: 2425420 JRCTOK J Cable: JAPANRADIO TOKYO

**Overseas Branches :** New York, Seattle, London

**Liaison Offices :** Kaohsiung, Manila, Bangkok, Singapore, Jakarta, New Delhi, Rotterdam, Piraeus, Las Palmas, Rio de Janeiro



**ISO 9001**

Certificate No. JQA-0591

Certificate No. FM 30249

