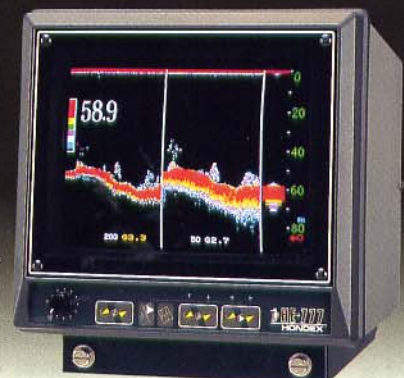
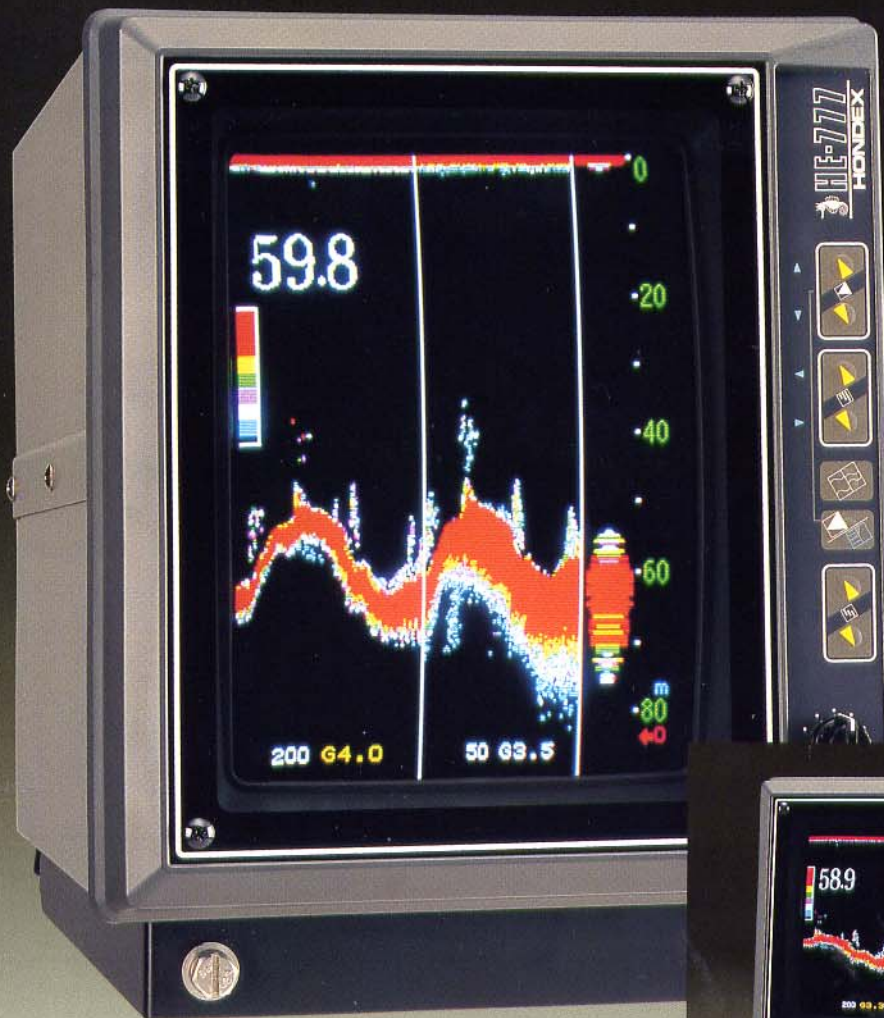


LEGEND IS BACK!

*A New Industry Standard, 50 & 200KHz, simultaneous sounding
by **Hondex** original high power dual frequency transducer.*

HE-777

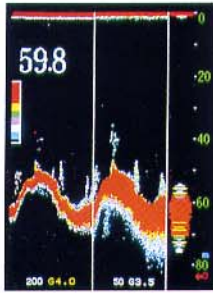
COLOR 10" dual frequency ECHO SOUNDER



SINCE 1956

SYMPPLICITY HONDEX RELIABILITY

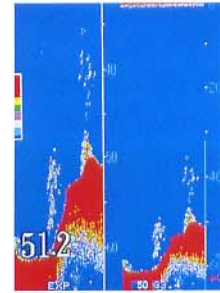
- Simultaneous sounding by 50KHz & 200KHz
- Hondex original commercial-grade bronze thru hull transducer
- Brilliant, High-resolution 10" color CRT
- Split screen (2F, 1F+Exp, B/L, History)
- Quad display style (Landscape/Portrait & Reverse)
- GPS position display



200/50/A-mode



Multi-lingual Menu

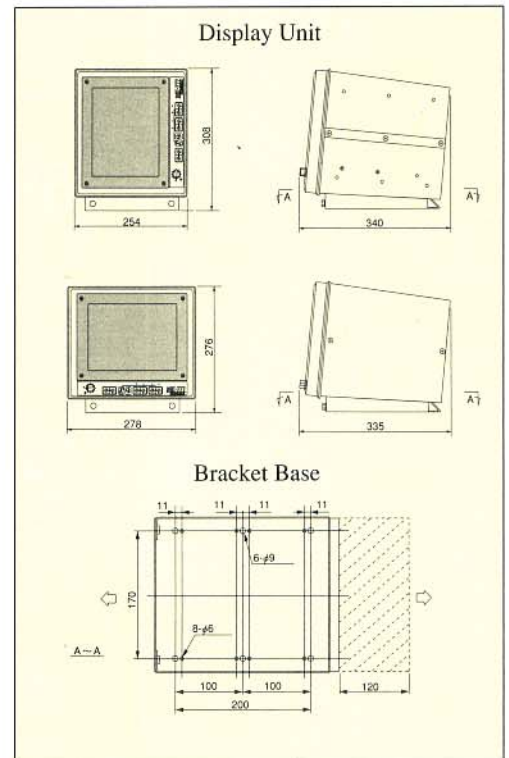


Exp/50(Single)

SPECIFICATIONS:

DISPLAY	10" Color CRT
PIXELS	320x240
VOLTAGE	11-35VDC
POWER CONSUMPTION	60W
SIZE	308x254x340mm w/bracket
WEIGHT	9.4Kgs approx.
OUTPUT POWER	600W
FREQUENCY	50&200KHz Simultaneous Soundings
GAIN	101 steps
RANGE	10, 15, 20, 30, 40, 50, 60, 80, 100, 125, 150, 180, 200 250, 300, 400, 500, 600, 800, 1000, 1500, 2000 (m, Ft, Fa, Br)
SHIFT MODE	2000-4000 Max. L+H, H/EXP+H, H/BL+H, H/HIS+H or H+L, L/EXP+L, L/BL+L, L/HIS+L
IMAGE STYLE	Portrait/P-Reverse, Landscape/L-Reverse
MENE	English, Italian, Spanish, Thai, Korean, Chinese
SPLIT SCREEN	side/side or upper/lower
EXPANSION	x2, x4, x8
B/L EXP.	x2, x4, x8 or 5/10/20 (m, Fa, Br), 10/20/40Ft
SWEEP SPEED	Freeze, 1/2/3/4/5
AUTO GEIN	Off/L/M/H
AUTO RANGE/SHIFT	Off/Range/Shift
CLEAN ECHO	Off/1/2
STC	Off/W/M/S
POWER REDUCER	L/M/H
UNIT	M/Fa/Ft/Br/Hiro
B.G.COLOR	Black/Blue
COLOR CONFIGURATION	8 kinds
CALIBRATION LINE	Off/On
A-MODE	Off/On
NMEA0183 INPUT	GGA (L/L), VTG (Speed/Direction)
NMEA0183 OUTPUT	DBT (Depth), MTW (Temp)
ALARM	Shallow, Deep, Zone, Anchor

Dimensions(mm)



Specification subject to change without notice.

Dealer



HONDEX is trade name of
HONDA ELECTRONICS CO.,LTD.
 20 Oyamazuka, Oiwacho,
 Toyohashi, Aichi, Japan 441-3193
 TEL: 81-532-41-2514
 FAX: 81-532-41-4441

