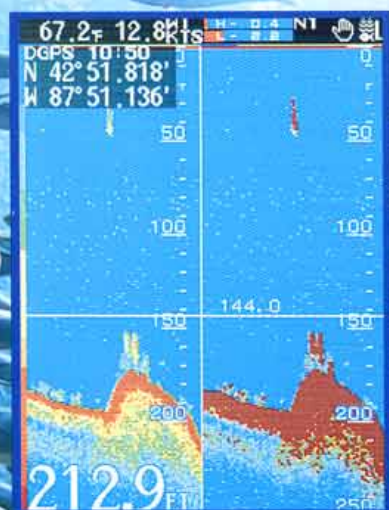


# JRC COLOR LCD FISH FINDER

## FF 50

Sound Advice!!



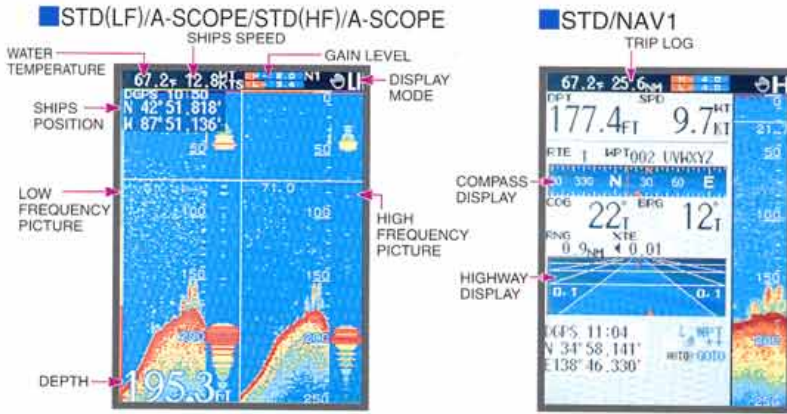
New:  
Mixed Image Technology  
Find schools of small fish  
where the Big fish feed.



- Dual Frequency 50/200kHz with 600w transmitting power.
- Clear-view Color TFT display  
(Equivalent to an 8-inch CRT in display size).
- Automatic Setting of Optimum Range and Sensitivity.
- Large Navigational Data Displays.
- Mixed Image : Overlay 50kHz & 200kHz Information on One Image.

# COLOR LCD FISH FINDER

# FF 50



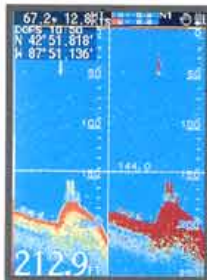
## SPECIFICATIONS

<b>Display</b>	6.5-inch Color LCD(TFT)
<b>Resolution</b>	320X234 dots (Screen Size 133mmX97mm)
<b>Presentation</b>	8 or 16 Color Gradation with 2-Pattern
<b>Range</b>	10~5,000ft, 5~1,500m, 3~1,000fm (Auto/Manual)
<b>Shift</b>	0~3,000ft, 0~1,000m, 0~600fm (Auto/Manual)
<b>Frequency</b>	200kHz / 50kHz (Dual Frequency)
<b>Power Output</b>	600W RMS (4,800W P-P)
<b>Depth Unit</b>	Meter / Feet / Fathom / Special Unit
<b>Speed Unit</b>	Knot, Mile/h, Km/h
<b>Display Mode</b>	1) Standard(LF or HF) 2) STD(HF) / STD(LF) 3) STD / Dual Frequency Mixed 4) STD /A-scope 5) STD(HF) /A-scope / STD(LF)/A-scope 6) STD / Zoom 7) STD / Auto Zoom 8) STD / Bottom Lock 9) Bottom Discrimination 10) Nav Data 1(Graphic) 11) Nav Data 2 (Numeric)
<b>Simulator</b>	Built-In
<b>Waypoint</b>	300
<b>Audible-visual alarms</b>	Shallow, Deep, Fish, Temp Upper, Temp Lower, Temp Rate, Arrival, Anchor, Off-Course
<b>Input Navigation Data</b>	NMEA0183 Input:GGA,RMC,LL,VTG,VHW,HDT,HDG,BWC,BWR,MTW Output:DPT,DBT,MTW — Standard GGA,RMC,LL,VTG,APB,BWC — Connected with GPS/DGPS Receiver
<b>Power requirements</b>	12V / 24V DC
<b>Power consumption</b>	approx. 25W
<b>Water Resistance</b>	IPx5
<b>Direct Connection To JRC GPS / DGPS Sensor Unit</b>	

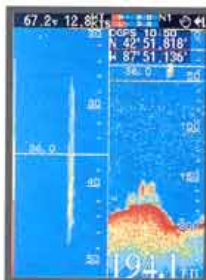
STD/ A-SCOPE



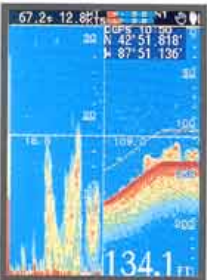
STD/MIX



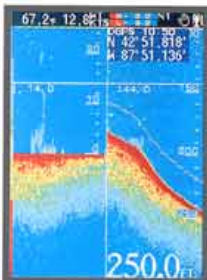
STD/ZOOM



STD/BTM



STD/BTM DISCRIM



STD/NAV2



## COMPONENTS

Description	Model No.	Q'ty	Remarks
Fish finder	JFC-500	1	See below the item
Transducer	CFT-2501TF(Transom)or CFT-2501HFA(Through Hull)	1	
Power Cable		1	length 1.5m
Sun Cover		1	
Spare parts		1	
Instruction Manual		1	

## OPTIONAL ACCESSORIES

Description	Model No.
GPS Sensor Unit	GPS100/112
DGPS Sensor Unit	DGPS200/212
In-Hull Installation Kit	MPBX21114

## TRANSDUCERS

Model No.	Frequency	Remarks
CFT-2501TF	200kHz / 50kHz (Dual Frequency)	Transom type with Speed & Temp sensor
CFT-2501HFA	200kHz / 50kHz (Dual Frequency)	Through Hull type with Speed & Temp sensor

## SYSTEM DIAGRAM



## OUTLINE DRAWING



## TRANSDUCER



\* CAUTION : Use of the ship's position requires the optional GPS or DGPS sensor.

● Specifications subject to change without notice. For further information, contact:

**JRC Seattle Branch:** 1011 SW Klickitat Way, Bldg. B, Suite 100, SEATTLE, WA 98134, U.S.A.  
Telephone: +1(206)654-5644  
Facsimile: +1(206)654-7030  
Homepage <http://www.jrcamerica.com>

**JRC(UK)Ltd:** 1st Floor, Friars House, 157/168, Blackfriars Road, London SE1 8EZ, U.K.  
Telephone: +44(0)20-7261-1188  
Facsimile: +44(0)20-7803-0996

**JRC Japan Radio Co., Ltd.**

Since 1915 JRC Homepage <http://www.jrc.co.jp/>  
**Main Office:** Akasaka Twin Tower(Main), 17-22, Akasaka 2-chome, Minato-ku, Tokyo 107-8432, JAPAN  
Telephone: Tokyo(03)3584-8833  
Facsimile: Tokyo(03)3584-8757  
Telex: 2425420 JRCTOK J Cable: JAPANRADIO TOKYO  
**Overseas Branches : Seattle, London**  
**Liaison Offices : Kaohsiung, Manila, Bangkok, Singapore, Jakarta, New Delhi, New York, Rotterdam, Piraeus, Las Palmas**



**ISO 9001**

Certificate No. JQA-0591 Certificate No. FM 30249



18EM